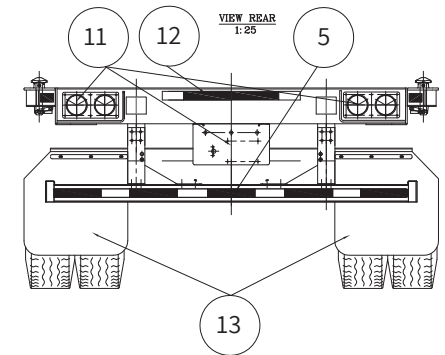
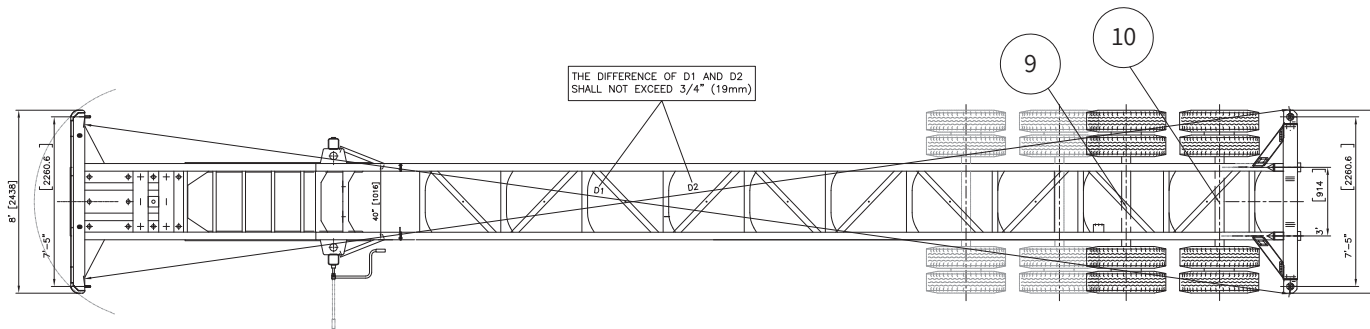
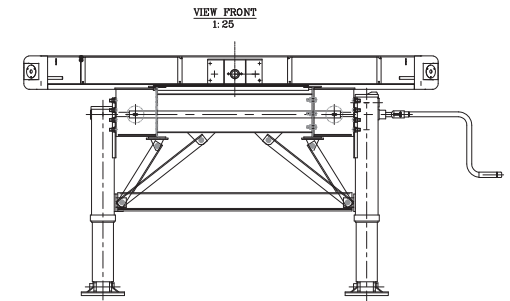
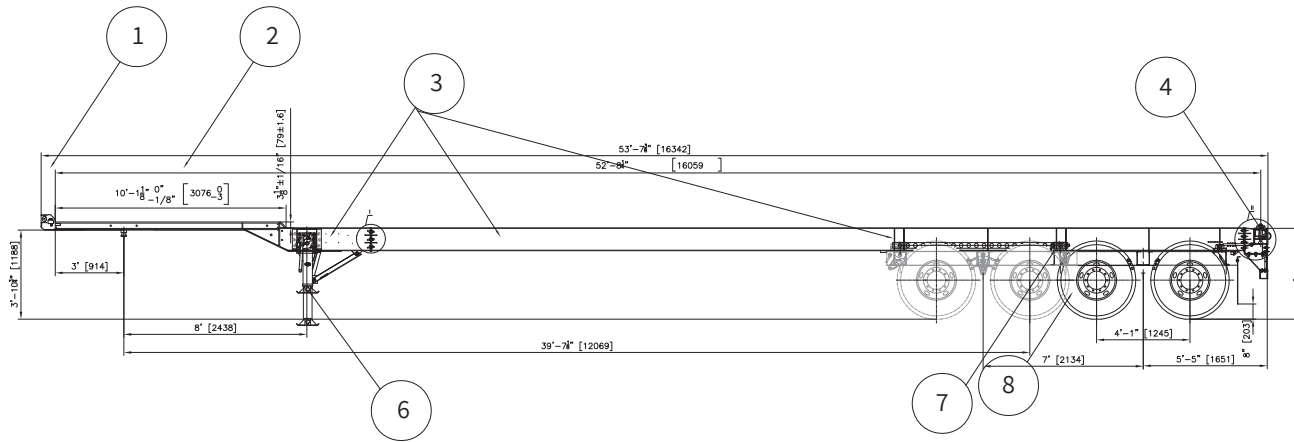


53' Gooseneck Specifications (typical configuration)



Item	Description	Qty.
1	Front Bolster	1
2	Upper Coupling	1
3	Main Frame	1
4	Rear Bolster	1
5	Rear Bumper Assembly	1
6	Landing Gear Assembly	1
7	Sliding Suspension Assembly	1

Item	Description	Qty.
8	Wheel Assembly	8
9	Anti-lock Bracking System	1
10	Axle	1
11	Lights/Electrical System	1
12	Reflective Marking	1
13	Mud Flaps	2

53' Gooseneck Specifications *(typical configuration)*

Function	
Carries one (1) 53' Domestic ISO container. Meets all TOFC, AAR, DOT, FMVSS, ANSI, SAE, and TTMA specifications	
General	
Overall Length	53' 7"(excluding rear bumper)
Overall Width	96"
Fifth Wheel Height	48"±1"
Rear Deck Height	48"±1"
Kingpin Location	36" (from rear face of front bolster)
Axle Spread	49"
Tandem Location	The tandem sliding range allows the distance between the center line of the king pin and the rear axle to be less than 40' (California / Rhode Island Regulation)
Tare Weight	7,450 Lbs (±2%)
Steel Structure & Components	
Material	High-strength GR50 steel
Crossmember	1/8" x 3" wide x 9" deep channel
GN Beam	4" deep fabricated I-beam, 4" wide 5/8" thick top and bottom flange, Grade 80 steel
Rear Bolster	8" wide x 3/8" thick top plate with 6-7/8" wide x 1/4" thick "U" channel
Suspension	Sliding mechanical
Axles	5" round axles with 22,500 lb capacity, 71-1/2" track, 16-1/2" x 7" Q Brake
Electrical	12 volt
Miscellaneous	Standard marking, Conspicuity tape, Document holder, 24" X 24" rubber mud flap

Please note: These specifications are typical of DCLI's fleet and not for any specific chassis. If you need exact specifications for a particular piece of equipment, please contact chassispecs@dcli.com.