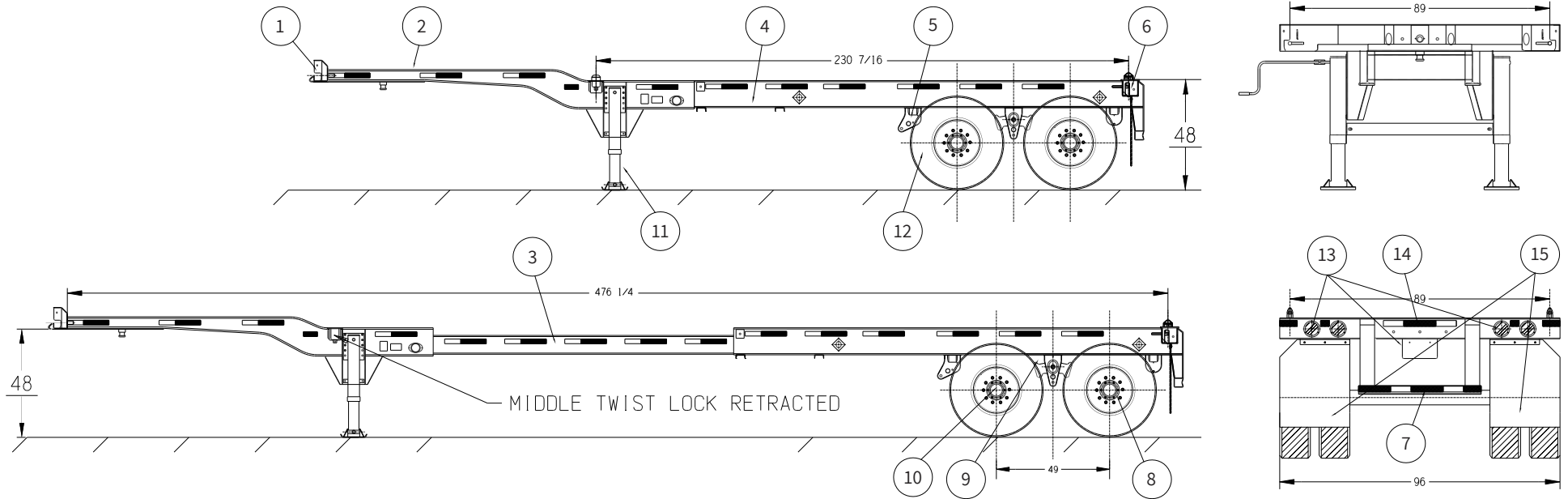


20'/40' Combo Tandem Specifications (typical configuration)



Item	Description	Qty.
1	Front Bolster	1
2	Gooseneck Beam Assembly	1
3	Extension Beam	1
4	Main Beam Assembly	1
5	Suspension Assembly	1
6	Rear Bolster	1
7	Rear Bumper Assembly	2
8	Axle	1

Item	Description	Qty.
9	Air System	1
10	Anti-lock Braking System	1
11	Landing Gear Assembly	1
12	Wheel Assembly	8
13	Lights/Electrical System	1
14	Reflective Marking	1
15	Mud Flaps	2

20'/40' Combo Tandem Specifications *(typical configuration)*

Function	
Carries one (1) 20' or one (1) 40' ISO or HI Cube Container Meets all TOFC, AAR, DOT, FMVSS, ISO, ANSI, SAE, and TTMA specifications	
General	
Overall Length	40'6" (extended) 30'6" (closed)
Overall Width	96"
Fifth Wheel Height	48"
Rear Deck Height	47 ½"
Kingpin Location	30" (face of bolster)
Axle Spread	49" (tandem)
GVWR	75,000 lbs.
Steel Structure & Components	
Material	Main rails are of high strength low alloy steel; all others are of AT550 grade 50
Main Rails	12" I-Beam Wide Flange 19lb/ft weight, hot rolled structural steel
King Pin	¼" pick up plate with 2" diameter king pin
Landing Gear	Two-speed 17" travel w/ low pro sandshoe
Hubs	Hub piloted cast hubs
Drums	Cast drums
Brakes	16 ½" x 7" quick-change brakes with non-asbestos lining
Wheels	(8) 8.25" x 22.5" steel wheels
Tires	(8) 11R22.5 14 ply radial
Brake System	Valve system for service brakes. 2S/1M ABS system
Paint	Zinc primer with urethane topcoat
Crossmember	Fabricated crossmembers
Suspension	Tandem axle 72" spacing / three leaf springs
Axles	71 ½" track, 22,500 lbs. each rated w/ PSI ATIS
Electrical	12-volt w/ modular wiring and plug type connectors

Please note: These specifications are typical of DCLI's fleet and not for any specific chassis. If you need exact specifications for a particular piece of equipment, please contact chassispecs@dcli.com.