

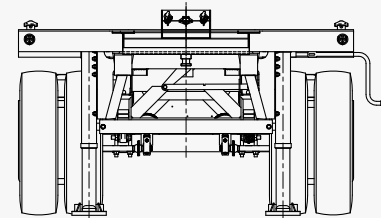
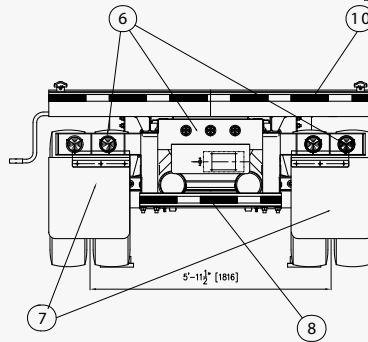
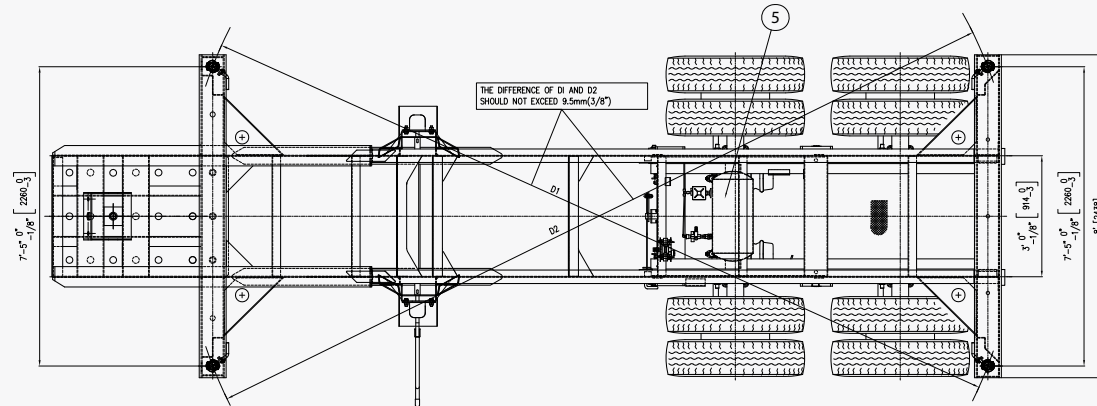
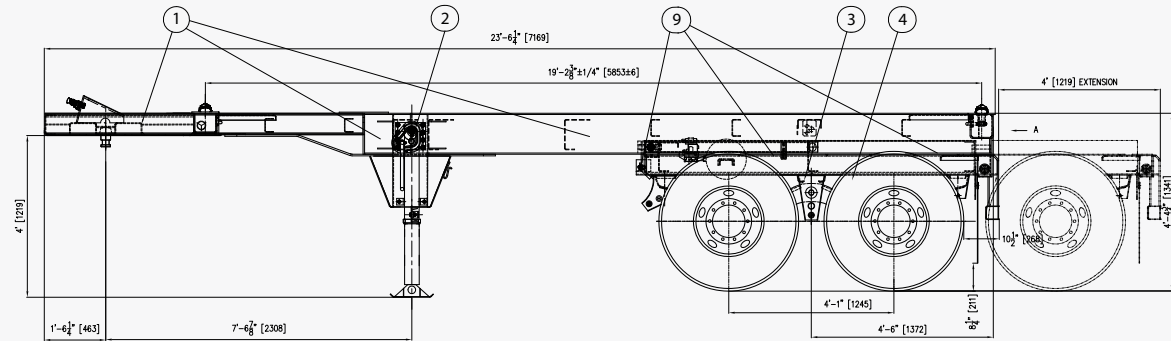
23.5-FOOT SLIDER

Typical Configuration

Item	Description	Qty.
1	Main Frame	1
2	Landing Gear Assembly	1
3	Suspension Assembly	1
4	Wheel Assembly	8
5	Brake Control System	1
6	Lights/Electrical System	1
7	Mud Flaps	2
8	Rear Bumper Assembly	1
9	Slider Assembly	1
10	Reflective Marking	1



For more information, visit DCLI.com



23.5-FOOT SLIDER

Specs

Typical Configuration



Function

Carries one (1) 20' ISO container.
Meets all TOFC, AAR, DOT, FMVSS, ISO, ANSI, SAE, and TTMA specifications

General

Overall Length	23' 6"/27' 6" (excluding rear bumper)
Overall Width	96"
Fifth Wheel Height	48"±1"
Rear Deck Height	52"±1"
Kingpin Location	18" (from front end of chassis)
Axle Spread	49"
Tandem Location	54" (from rear face of rear bolster)
Tare Weight	6,700 Lbs (±2%)

Steel Structure & Components

Material	High-strength GR50 steel
Crossmember	Fabricated channel
Slider	Tubular with positive safety solid bar stop. Two spring loaded pins lock the slider frame to main frame in retracted or extended location
Upper Coupler	¼" thick w/ 2" diameter drain holes, reinforced by channel-type kingpin support. 2" AAR certificated kingpin
Suspension	Mechanism suspension with three leaf spring
Axles	5" round axles with 22,500 lb capacity, 71-1/2" track, 16-1/2" x 7" Q Brake
Electrical	12 volt lighting system with modular wiring harness
Miscellaneous	Standard marking, Conspicuity tape, Document holder, 24" X 24" rubber mud flap

For more information, visit [DCLI.com](https://www.dcli.com)

Please note: These specifications are typical of DCLI's fleet and not for any specific chassis. If you need exact specifications for a particular piece of equipment, please contact chassispecs@dcli.com.